



***New Emergency  
Management in a Resilience  
Era Facing Health, Climate  
and Energy Challenges***

***6<sup>th</sup> to 10<sup>th</sup> December 2021***

Date and slot of presentation to be  
filled in shortly

Authors names and affiliations



Projecting  
Resilience

---

**CLIMATE SECURITY  
IMPLICATIONS FOR NATIONAL  
SECURITY**



**Kyle King**  
Managing Director  
Capacity Building  
International



This Photo by Unknown Author is licensed under CC BY-NC

# NATIONAL INTELLIGENCE STRATEGY

*of the United States of America*

2019

## Known Issue

“Increasing migration and urbanization of populations are also further straining the capacities of governments around the world and are likely to result in further fracturing of societies, potentially creating breeding grounds for radicalization. Pressure points include growing influxes of migrants, refugees, and internally displaced persons fleeing conflict zones; areas of intense economic or other resource scarcity; and areas threatened by climate changes, infectious disease outbreaks, or transnational criminal organizations.”

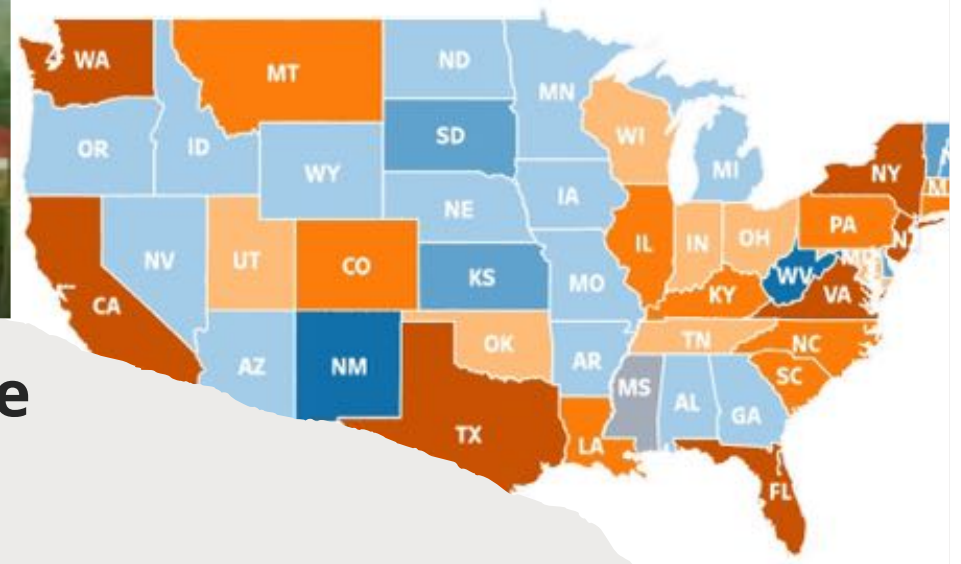
<https://www.gleick.com/blog/a-history-of-u-s-defense-intelligence-and-security-assessments-of-climate>





## Building Resilient Infrastructure Communities Fiscal Year 2020 Application Period Submissions

Number of Subapplications	Number of Structures to be Mitigated	Number of Small Imp Communities
<b>991</b>	<b>1,521</b>	<b>98</b>
Total Subapplication Costs	Federal Cost Share	Non-Federal Cost
<b>\$5.50B</b>	<b>\$3.60B</b>	<b>\$1.90B</b>
Total Subapplication Costs		
<ul style="list-style-type: none"> <li>&lt;\$1M</li> <li>\$1M - \$5M</li> </ul>	<ul style="list-style-type: none"> <li>\$5M - \$50M</li> <li>\$50M - \$100M</li> </ul>	<ul style="list-style-type: none"> <li>\$100M - \$200M</li> <li>&gt;\$200M</li> <li>No Submission</li> </ul>



**Building Resilience at Home**  
Systems and Communities



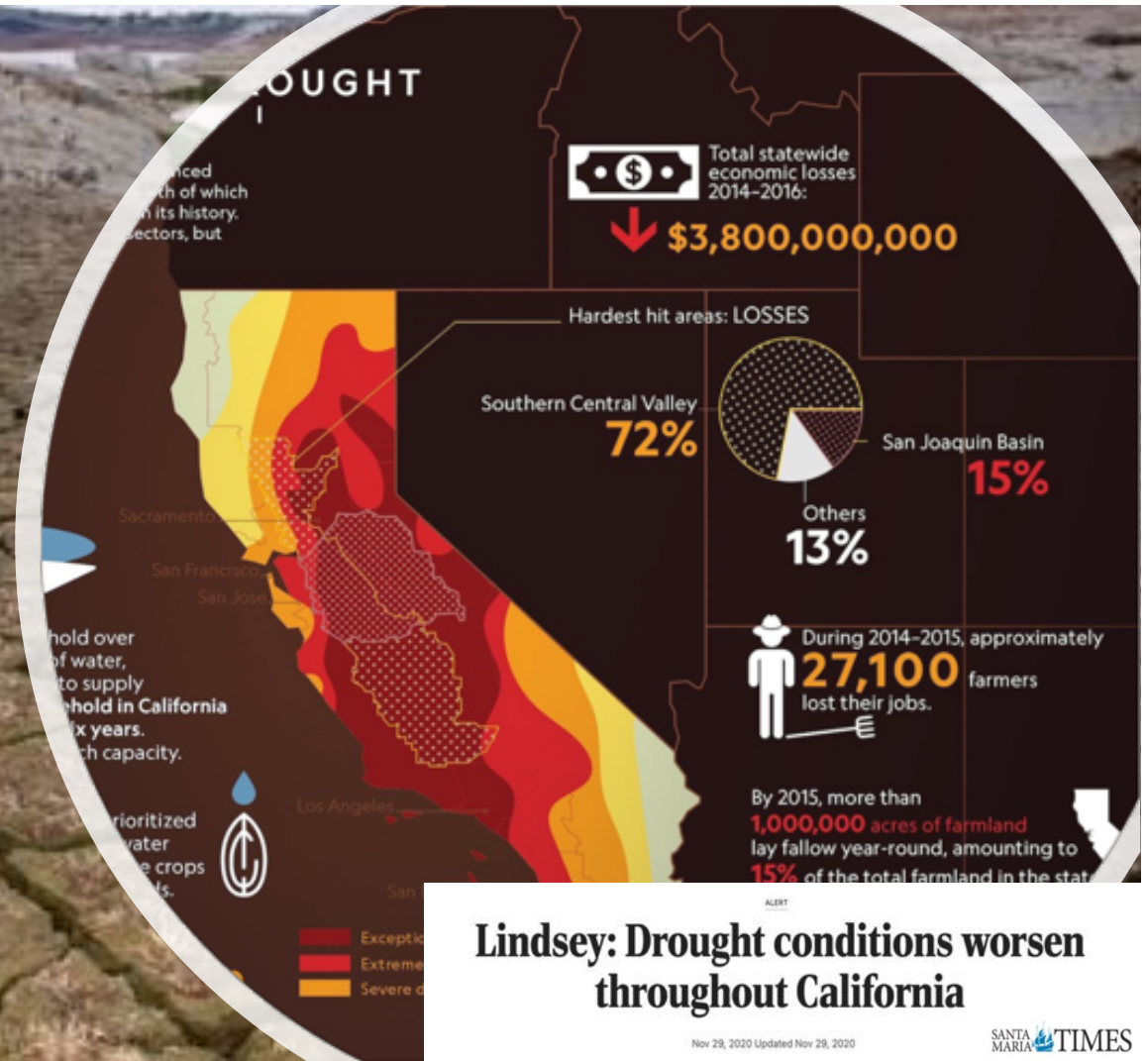
# Relevance to National Security





Example:

At home or  
abroad, same  
Climate Security  
related issues





# Example: Multiplier Effect of Climate Change and Security



**EUROMAIDAN PRESS**  
NEWS AND VIEWS FROM UKRAINE

HOME UKRAINE INTERNATIONAL RUSSIAN AGGRESSION MORE ABOUT US

**Critical water shortage in Crimea may prompt new Russian attack against Ukraine**

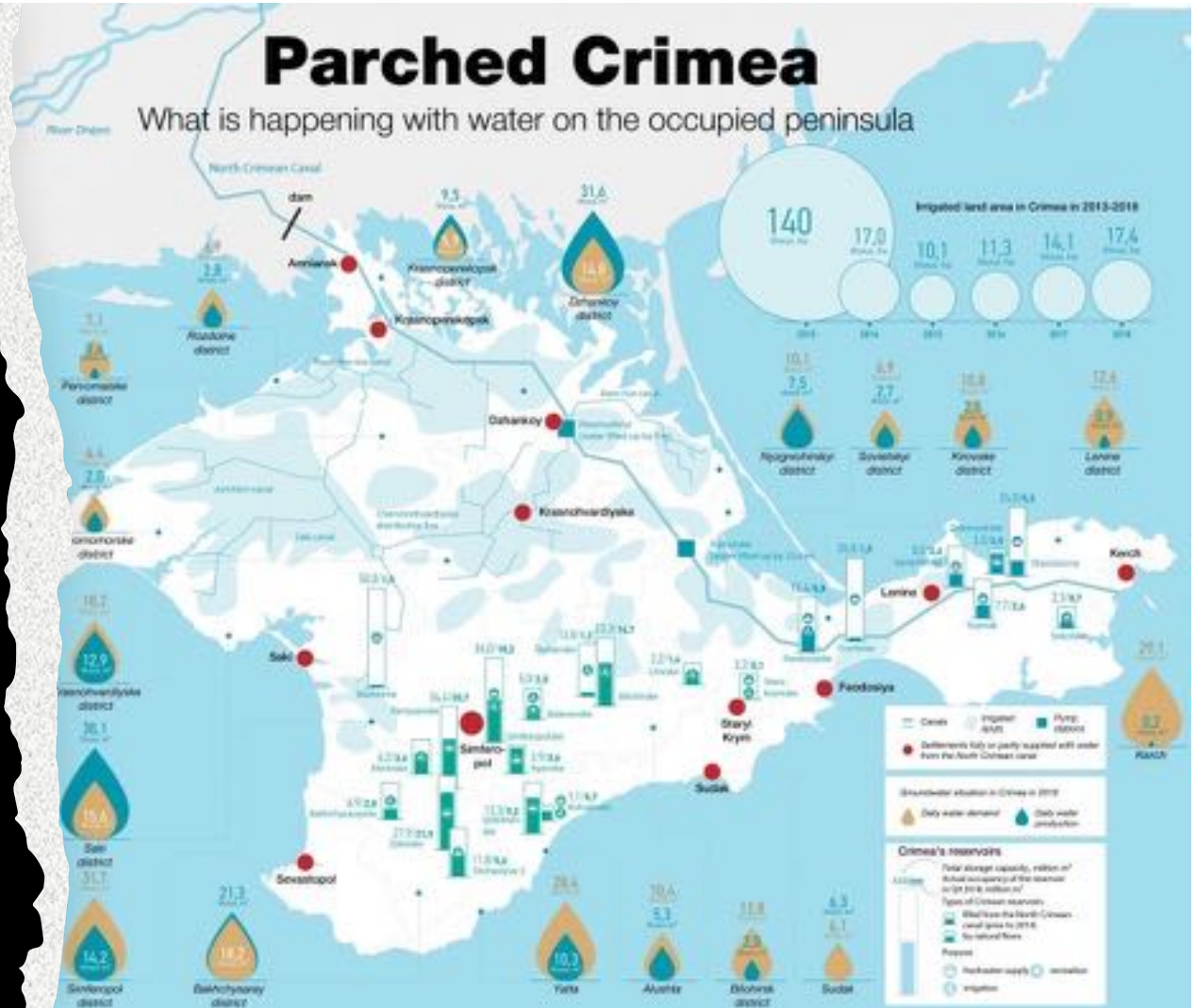





## Key Points

- Complexity
- Instability

Similar  
Conditions  
Different  
Outcomes





Poland  
And  
Belarus

“Weaponization” of Migration

# What does this new environment mean for us as an emergency management community?

- More complex events
- Migration of populations
- Persistent strain on resources
- Integration of Civilian and Military Resources





## What does this new environment mean for us as an emergency management community? (cont.)

- Recovery is inherently Political
- Largely Humanitarian in Nature
- Slow Onset / Rapid Escalation / Slow Recovery
- Climate Security is a multiplier

