



Citizens and cities facing new hazards and threats

30th November to 4th December 2020

The Terrible Twins

Brian Holecek OAM CEM

AIM

The intent is not to resolve the issue but to challenge the current perspective and how do we as professionals move forward in this field and terminology; if indeed we need to?



Crisis Management

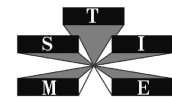
Incident Management

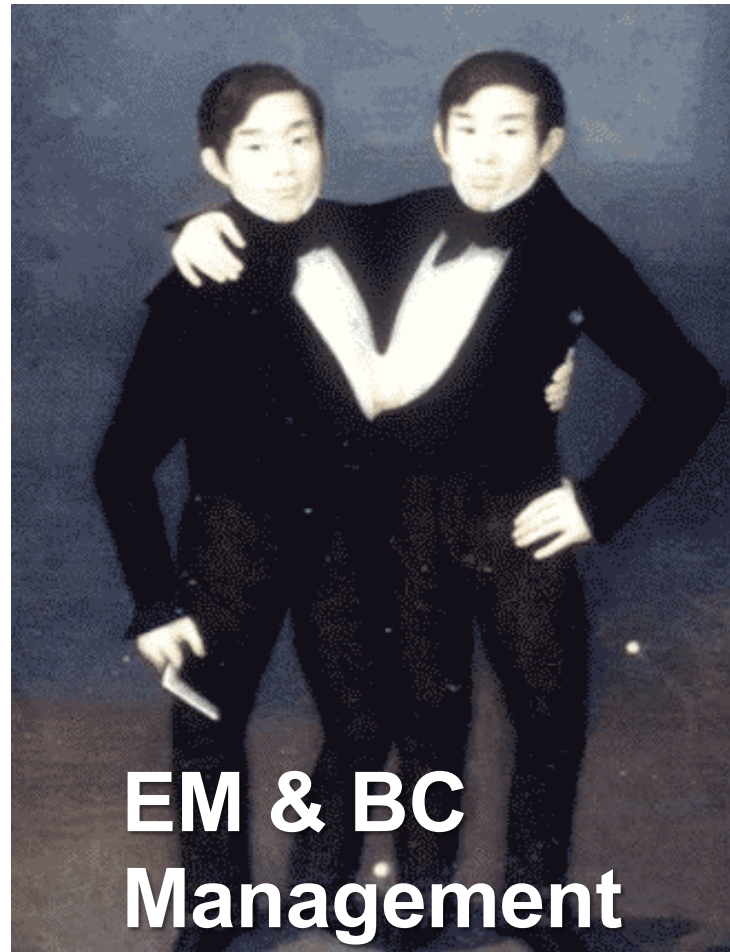




The Terrible Twins

Reference: <https://www.freepik.com/free-photos-vectors/twins>





Brian Holecek OAM CEM

The Terrible Twins

Reference:13 November 2004 [CatherineMunro](https://commons.wikimedia.org/wiki/File:Chane-ene-bunker-DD.png) <https://commons.wikimedia.org/wiki/File:Chane-ene-bunker-DD.png>

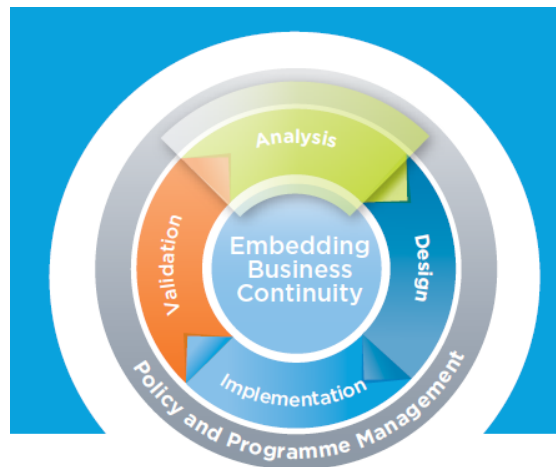


Source: crisisresponse.promoteprevent.org/four-phases-emergency-management



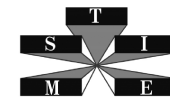
Fig 1 Community Engagement Model for Emergency Management

Source: www.ses.tas.gov.au



Source: BCI GPG 2013

Brian Holecek OAM CEM





[Photo reference: https://all-free-download.com/free-photos/triplets.html](https://all-free-download.com/free-photos/triplets.html)

ISO 31000 Process Of managing Risk

Brian Holecek OAM CEM

The Terrible Twins



Parting Thought

As Darwin states, it is not the strongest or the most intelligent that will survive, rather it is the ones that are most adaptive. Nature has been promoting resilience for thousands of years; it is a way of thinking and operating in tune with your environment successfully. It is time for a strategic change in how we manage and lead our businesses; it is time for building resilience through leadership.

Extract from Black Swans Vs Organisational Resilience LinkedIn Feb 28 2016,
Aaron Gracey MA MSc PGCE FInstLM Squareapplesuk:



Thank you

Contact Details

btholecek@outlook.com



References:

- BCI GPG
- Australasian Inter-service Incident Management System (AIIMS)
- Kevin Stevens BC Consultant (Energy and Utilities) at CGI 22/10/15
- Photos sourced form various Google picture sites

